

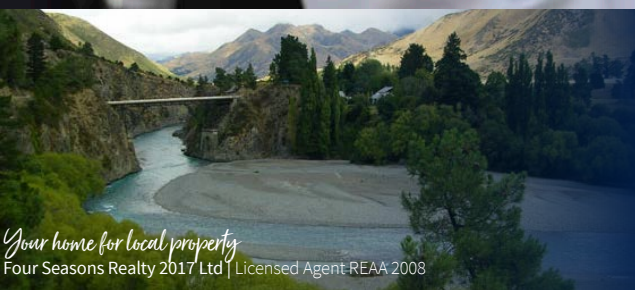
hanmer springs village news the pinkie



December 20th, 2022

FREE

www.thepinkie.co.nz



If you are thinking of **buying, selling or renting**, call your local Harcourts Hanmer Springs Office today!

☎ 03 315 7084

✉ hanmersprings@harcourts.co.nz

📍 Shop 3, 12a Conical Hill Road

Harcourts
Four Seasons Realty

PINKIE

Christmas and New Year Dates

This is the last Pinkie for 2022

The first Pinkie for 2023 will be on

January 10th.

As usual, due to closure of the printers over the Christmas/New Year period we will not be publishing a Pinkie on December 27th and January 3rd.

Family Violence – It's Not OK –

get help on 0800 456 450

Women's Refuge 0800 REFUGE (733 843)

For emergencies ring 111,
North Canterbury Police 105

Lifeline 0800 543 354,

Youthline 0800 376 633 or text HELP (4357)
for free, 24/7, confidential support .



**R E Cook Painting
Contractor
Limited**

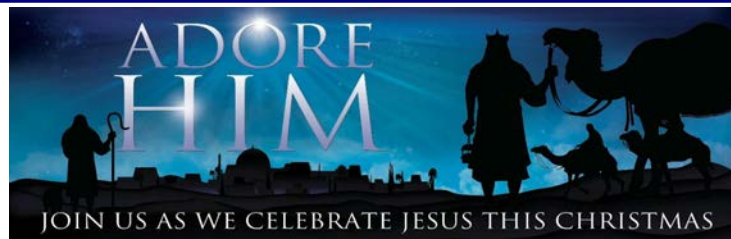
Robin Cook

I Tennyson Close
Hanmer Springs 7334
E: cookrobin@xtra.co.nz
Mob: 021 434 152



Hanmer 0274 337 985

Christchurch, Hanmer Springs, Kaikoura,
Cheviot, Waiau, Rotherham, Waikari, Waipara
Amberley, Rangiora, Greta Valley, Culverden



Children's Christmas Crafts

Wednesday 21st December

- ♦ 9.30 - 12pm in the Hanmer Memorial Hall
bring your own drink, snacks and gold coin donation
Registration to Sarah Gardiner 0210 831 5549

Christmas Eve

Community Carol Service

- ♦ 8pm Carols + readings
- ♦ Collection taken for the Christchurch City Mission
- ♦ Supper in the church hall afterwards

Christmas Day

- ♦ 9am Christmas Communion

Anglican Church of the Epiphany

33 Jollies Pass Road

All Welcome ☺

ST ROCH'S CATHOLIC CHURCH

27 AMURI AVENUE

Christmas Mass Schedule

SAT 24 DEC	HANMER SPRINGS	VIGIL MASS	9.00PM
Sat 24 Dec	Amberley		6.00pm
Sun 25 Dec	Culverden		10.00am
Sun 25 Dec	Cheviot		10.00 am

*Christmas
Services*



**REMNANT
CHURCH, NZ**

Sunday, 18th, 10am: Christmas Celebration Service
and Children's Church, the meaning of Christmas.

Sunday, 25th, 9-9.45am: Christmas Day Family service.
Join us on these special days - 108 Rippingale Rd.

Jesus the Reason for the Season

VISITING PROFESSIONALS

- Plunket – Claire – second Monday of every Monday

COVID-19 VACCINATION CLINIC

There will be **NO** Covid Clinics until January 2023.



Watch this space for upcoming dates and times 😊



To all our Patients
& Community

Have a wonderful Christmas

From your Team at Hanmer Springs Health Centre

**ALL THE INFORMATION YOU NEED FOR
OVER THE CHRISTMAS HOLIDAY PERIOD!**



OPENING HOURS

- Mon 19th -Thurs 22nd December 8.30am-5pm
- Fri 23rd December 8.30am-4.00pm
- Sat 24th - Tues 27th December CLOSED (on call service available for emergency appointments only)
- Wed 28th - Friday 30th December 8.30am-5pm **EMERGENCY/ACUTE APPOINTMENTS ONLY ON THESE DAYS**
- Sat 31st December -Tues 3rd January CLOSED (on call service available for acutes only)
- Wed 4th -Fri 6th January 8.30am-5pm **EMERGENCY/ACUTE APPOINTMENTS ONLY ON THESE DAYS**

COVID-19 antiviral medicines can help people who are at risk of becoming very sick with COVID-19. Who can get antivirals?

You can get free antiviral medicines if you:

- ✓ have COVID-19 and symptoms or you are a Household Contact
- ✓ and have symptoms, and ✓ became sick within the last 5 days, and
- ✓ are eligible for the medicine - Eligible people include:
- ✓ Māori or Pacific people aged 50 or over
- ✓ everyone aged 65 or over
- ✓ anyone aged 50 or over with fewer than 2 COVID-19 vaccinations
- ✓ anyone with a severely weakened immune system
- ✓ anyone with Down syndrome
- ✓ anyone with sickle cell disease
- ✓ anyone who has previously been in critical high dependency hospital care from COVID-19 - anyone with 3 or more high-risk medical conditions.

If you call our clinic phone out of hours, your call is always answered by a registered nurse who will assess your needs, offer advice or, if required, pass the call to our on-call clinician. It can take several minutes to answer the phone so please be patient and hold, and follow the voice prompts carefully

IN AN EMERGENCY DIAL 111

The Pinkie is published by
Hanmer Springs Village News Ltd
Richard Tapper
2/53 Conical Hill Road
Hanmer Springs, 7334
Website

www.thepinkie.co.nz

This week's cover: Leading the parade
Other Photos in this issue
Richard Tapper, Tom Davies, Hanmer Springs
School and historical archives

'The Pinkie' is a registered trade mark
The Pinkie is a Member of the Community Newspapers Association

CONTACT

If you have something for The Pinkie
please email it to

hsvillagenews@xtra.co.nz

or

info@thepinkie.co.nz

or phone or text

0274 337 420

Deadline for material (including advertising)

Is midday Sunday if the space is
pre-booked, otherwise Friday 5pm

Opinions expressed herein are not
necessarily those of the editor or publisher

HANMER SPRINGS CHRISTMAS AND NEW YEAR REFUSE AND RECYCLING ARRANGEMENTS

Refuse and recycling collections in Hanmer Springs over Christmas and New Year are running one day later than normal.

Monday 26 December and Monday 2 January	No collections – public holidays
Tuesday 27 December and Tuesday 3 January	Hanmer Springs collections

- Only Hurunui District Council bags will be collected, these are available for purchase at Hanmer Springs library, Service Station, Super Liquor and the Log Cabin.
- Bundles of cardboard will not be collected; these can be recycled via the transfer stations.
- Bags must be securely tied and at the kerbside or council collection point by 8am.
- Collection times may vary to normal, and the crew will not return to collect bags placed out late.
- Refuse bags must not exceed 15kg.
- Bags split prior to the crew's arrival and non-official bags will not be collected.

What is accepted via the recycling collections if clean, dry, and loose in a Council recycling bag?

- Newspapers, magazines, office paper and telephone directories.
 - Cardboard, greetings cards, junk mail, envelopes, and egg boxes.
 - Food, drink, and pet food cans.
 - Rigid plastic bottles and small containers, types 1, 2 and 5 only with lids removed.
- Household glass bottles will be collected in Hanmer Springs providing they are in a Council issued recycling box, with all lids removed and no other recycling or contaminants in the box.
- Glass bottles left out for collection in non-HDC boxes will be stickered and left.

What cannot be recycled?

Soft plastics, paper with glitter on, plastics 3, 4, 6 and 7, tetrapaks, polystyrene (includes meat trays), plant pots, plastic strapping, clothing and shoes, food-stained paper or cardboard, coffee cups, plastic lids, foil trays and food waste are not recyclable. *If in doubt throw it out.*

Glass bottles must not be put in recycling bags. Please recycle via any transfer station.

Transfer Station Arrangements

Hanmer Springs Transfer Station over Christmas and New Year will be closed on Public Holidays. Normal opening hours apply at all other times.

Transfer Station Hours

Despite advertising for a staff member to operate Hanmer Springs transfer station, unfortunately the Council has not been successful in recruiting for this role. Over the Christmas and New Year holiday period, the Transfer Station will open on the following days and times:

- Tuesday 27 December and Tuesday 3 January: 11am - 1.30pm
- Wednesday 28 December and Wednesday 4 January: 11am - 1.30pm
- Friday 30 December and Friday 6 January: 11am - 1.30pm

Seasonal Greetings from Tom Davies, your Councillor.

I stood on the school field yesterday talking with the students before the term finished when Blake pointed out a helicopter with a water bucket. 'Oh dear', I thought, 'is Civil Defence ready? Of course we are. Then Amelia asked a great question "What does a Councillor do". Here is the answer I gave her.

Firstly, I must read a huge number of reports. They are the culmination of significant amounts of work by individuals or officers and to do them justice I have to read them thoroughly and in detail. Secondly, we have lots of meetings where often we must approve or turn down those documents. Hundreds of words, pages, and pages, given a Yay or a Nay, to be actioned.

Lastly there are community group and other events that I attend. In the last two weeks I have attended The Heritage Forest Trust, the Community Trust to celebrate Rosemary Ensor's years of continual work, the HS Thermal Pools meeting, and a Community Board meeting in the library where we sat surrounded by some amazing art. One of the highlights was the Secondary School Achievers awards and presentations at Greta Valley where we awarded students with grants to further their educational studies. This was a wonderful event to be invited to with some very emotional moments.

Then last night, our Mayor Marie Black and myself were asked to be judges for the Hanmer Springs Christmas Parade. The Business Association, Community Board, and a team of locals headed by Annie Truman, put on a magical event. What a pleasure to be one of the judges of such amazing floats and presentations, but what a difficult job. Congratulations to all who put in hours and hours to put on such an event for the hundreds in the audience. Many said it was the best to date and I tend to agree. There were winners and losers, but the real winners were our community and our tamariki. The queues to talk to Santa and get a wee gift were incredible and lasted for at least an hour, but there was wonderful entertainment by The Notables lead by Marguerite and Barry, and Hanmer Sings by the ever-bubbly Roz to keep the party going whilst the line moved along.

Big shout out to Up the Garden Path, their Terra Cotta pots with Geraniums brightening up our village.

At this festive time, I sincerely wish you all seasons' greetings and I hope you all have a brilliant holiday. Please stay safe, try and rest, be mindful of others. Be kind and generous.

I will leave the last word to The Geens, their brilliant float, showed planes of different countries that at times have fought but the message was "Peace of All the World and Goodwill to all"



Christmas Fare



Glazing The Ham

Ham Glaze adds the most beautifully delicious sticky exterior! Nothing creates a more festive table for a special gathering of family and friends than a platter of **baked ham**, glistening with a gorgeous, caramelised glaze. If ham is on your dinner menu, you'll definitely need to know how to make a quick **ham glaze**.

The Easy Glaze

⅔ cup brown sugar
¼ cup orange juice or pineapple juice
2-3 tablespoons dijon mustard or grainy mustard
½ teaspoon garlic powder
pinch ground cloves

Instructions

Whisk all ingredients together.
Brush over a scored ham.
If desired, brush extra ovetop and grill to make the glaze golden.

My Favourite Glaze

1 jar Roses Lime Marmalade
½ cup to 1 cup orange juice

Instructions

Put the jar of marmalade in a stainless pot and stir in half the orange juice. Allow to gently come to simmering adding more orange juice if it reduces too much. Paint over your scored ham and repeat the process half way through cooking.



Cranberry Sauce (Make Your Own)

This home made version of cranberry sauce is streets ahead of that insipid sweet sauce you buy in jars.

Ingredients

2 tsp olive oil
1 red onion, finely chopped
2cm-piece fresh ginger, peeled, cut into thin matchsticks
170g pkt dried cranberries (craisins)
100g (1/2 cup, firmly packed) brown sugar
125ml (1/2 cup) red wine
125ml (1/2 cup) water
2 tbsp red wine vinegar
1 dried bay leaf
a pinch of ground cinnamon

Preparation

Step 1

Heat oil in a medium saucepan over low heat. Add onion and ginger. Cook for 5 minutes or until soft.

Step 2

Add craisins, sugar, wine, water, vinegar, bay leaf and cinnamon. Stir to combine. Increase heat to medium-low. Simmer for 20 minutes or until the craisins are soft and the mixture thickens.

Step 3

Set aside to cool. Transfer the relish to an airtight container. Store in the fridge for up to one week.

Popularity of forest critters on the rise

A record number of people are expected to “talk to the animals” on the Hanmer Heritage Forest’s Amble these summer holidays.

Last January some 12,950 people were recorded as walking the 30-minute amble through old and new exotic forests which features sculptures of birds, animals and other critters along its circular length.

Over the year ended last November, more than 81,000 people, including many families, had walked it.

Hanmer Heritage Forest Trust chairperson Roz Clayton said the numbers were outstanding, making it one of the five most popular things in to do in the resort according to newzealand.com.

She expected the numbers could only grow and she would not be surprised when it passed 100,000 a year considering the sculptures have only been progressively placed as the trust could afford over the past four years.

The walking track is flat and accessible for wheelchairs and prams.

Posts with images of the wooden dog statue at the start of the walk lead walkers around and back to the entrance.

Because the walk has become so popular, further traffic management and parking systems are planned in Jollies Pass Road.

Six seats around the amble allow walkers time to stop, listen to the birds and contemplate.

Cycles are not allowed in order to keep the track in good condition and protect the visitor enjoyment. The 204ha Heritage Forest had a host of more challenging cycle tracks for cyclists to enjoy, Roz said.

“The Art on the Forest concept started off as a simple way of adding to the Heritage Forest’s appeal and it has been an outstanding success.”

It showed what could be accomplished when the community worked in with official parties to achieve a goal.

The Hanmer Heritage Forest Trust acts in a community advisory capacity to the forest manager, Rayonier Matariki Forests, and the landowners, Ngai Tahu.



Job Vacancy Transfer Station Operator – Hanmer Springs

This is a great opportunity based in Hanmer Springs to run the Hanmer Springs Transfer Station.

We are looking for someone who will be employed by the Hurunui District Council to operate the Transfer Station during normal opening hours for approx. 10 hours in the winter (over three days) and 15 hours in the summer (over four days).

The Council recognises that this role may suit one person or perhaps two people to share the role, with one working the weekend hours and the other the week hours – we are happy to consider either.

About the role | Mō Te Tūranga - Transfer Station Operator

You support the community and the Council by minimising waste that goes to landfill by utilising available schemes for waste minimisation. This includes ensuring all refuse and recycling deposited by members of the public is acceptable and sorted into the separate containers and that contaminants are removed from the green waste and glass and recycling.

You will be working during public opening hours and have regular contact with our members of the public.

About you | Mōu

We are looking for somebody who is interested in waste reduction and recycling initiatives and recognises customer feedback as a positive to encourage improvement.

We would like you to:

- Have a good level of fitness and ability to lift items.
- Possess a certificate in First Aid or be willing to undertake training.
- Availability to work during weekends and holiday periods.
- Work as part of a team to ensure the meeting of customer needs and service provision.

For further information: contact Sally Cracknell, Team Leader - Waste Minimisation sally.cracknell@hurunui.govt.nz, 027 240 1107.

To apply for this job go to: <https://hdcjobs.co.nz/Vacancies> and enter ref code: 6195443.

Applications close 08 January 2023.

Please note only candidates who have the right to work in New Zealand will be considered.



The road reserve on SH7a next to the Hanmer Springs Road footpath will be returned to grass.

This decision was passed at the Hanmer Springs Community Board meeting on Monday December 12th, and relates specifically to the area between Argelins Road intersection and Ensors Drive.

In December 2021 Hurunui District Council undertook public consultation with the Hanmer Springs Community, requesting feedback on what they would like this section of reserve to look after the footpath immediately beside it was constructed. (The establishment of the footpath

resulted in the removal of the trees that lined the road.)

Although these trees did beautify the entrance to Hanmer Springs, grassing the reserve will mean less maintenance, better visibility for people navigating driveways, and less potential damage to underground water pipes.

The cost of sowing the grass and maintaining the area will be covered by Council, and was budgeted for in the Long Term Plan.

Adjoining property owners will be expected to mow their verges as they did previously before the trees were where removed.

The cost of sowing the grass is covered in the 'Waterline and footpath project' cost. Adjoining property owners will be expected to mow and maintain their verges as they did prior to the removal of the trees.



164539



Spring Opening Hours

Monday	Appointment Only
Tuesday	Appointment Only
Wednesday	9:00am - 3:00pm
Thursday	9:00am - 3:00pm
Friday	9:00am - 3:00pm
Saturday	9:00am - 3:00pm
Sunday	Closed

Decorative Stone

- Shotover Schist
- 19mm Amuri Lime
- Crushed Amuri Mix
- Teddington Chip
- Black Chip
- 20mm Washed Rounds
- 19mm Blue Chip

Bark & Mulches

- Bark Mulch
- Deco #2
- Bounce Bark
- Black Forest
- Droughtbuster
- Homemade Mulch
- Med/Fine Mulch
- Premo Chip

Soil & Compost

- Premium Screened Topsoil
- Vegie Mix
- Flourish Compost
- Fresh Saw Shavings

Sands & Aggregates

- Pre Mix
- Pea Metal
- Bedding Sand
- AP20
- AP40
- Crusher Dust

Landscaping

- Landscape Pavers
- Landscape Boulders
- A Grade Railway Sleepers



HANMER SOLUTIONS

Your **North Canterbury** security, TV & audio, test & tag and traffic management **specialists!**



Alarm Systems



CCTV



Locksmithing



Fire Protection



Security Patrols



Test and Tag



Television



Traffic Management



Audio



Guards



Enquire 03 399 3732

211 Jacks Pass Road, Hanmer Springs | info@wilsonconstruction.co.nz

www.hanmersolutions.co.nz

03-315 7262

*Window clean *Gutter clean *Height access
*Building washes and much more...



MR. SPOT

Professional Cleaning Services

Call Chen on 027 670 7768
That's 027 MRSPOT

SITEWISE
GREEN > 2019/20

Helping Hands

Consultancy and Care Services ♥

PENNY MONTEATH
SENIOR HOME CARE SPECIALIST

- HOME CARE
- TECH SUPPORT
(PHONES/EMAIL/TEXTING)
- COMMUNICATION NEEDS
- RESPITE CARE
- WHEELCHAIR HIRE



Ph: 027 2233 845

Email: penny@helpinghandshanmer.co.nz

Hanmer Springs

Bird Feeders

As produced by
Hanmer Springs
Mens' Shed
\$35

Available from
Mens Shed
or call
Neil Whitaker
0220 704853



LADIES AND MEN'S HAIRDRESSERS

PHONE 027 452 7834

John Hewitt (RES,EST)
Computer Consultant
Apple/Windows

ProWorks

Sales/Service
Hardware/Software
Located Locally

87A Woodbank Road
Hanmer Springs 7334

Contact 021 241-3899
john.proworks@gmail.com



HANMER STORAGE

CALL RICK 03 315 7401 OR 027201 4536
available in Hanmer Springs

- *secure closed yard.
- *short or long term rental units
- *secure, fireproof, dry and rodent-free
- *suitable for furniture, cars, tools etc
- *containers for sale or hire

www.hanmerstorage.co.nz

Damian Youngman

Interior Plastering

Qualified & experienced professional tradesman

Big & small jobs



Damian Youngman Plastering

M: 027 627 3255 | E: capybara@outlook.co.nz

Type to enter text



Manual Therapy, Sports Injuries,
Exercise Prescription, Acupuncture
For appointments phone Chris Dixon

0274209766



Electrify everything

Let's try again, this time with feeling.

BIWF2 is a wind turbine that sticks up out of the Atlantic Ocean, about fifteen miles off the coast of Rhode Island. It's six hundred feet tall, which is higher than the Washington Monument, and its blades are more than two hundred feet long.

BIWF2 has one neighbour half a nautical mile to the north and three more neighbours to the south. Together the turbines make up Block Island Wind Farm, America's first offshore wind operation. A dozen more wind projects are currently planned off the East Coast, from Massachusetts to North Carolina. The turbines that will be erected in these projects will make BIWF2 look puny.

BIWF2 is a symbol of what can be accomplished when people put their minds to it.

In 1992, the year of the Earth Summit, the world had exactly one offshore wind farm, called Vindeby. Situated off the Danish island of Lolland, it consisted of eleven turbines, which, collectively, produced less power than BIWF2 does today. Now there are scores of offshore farms, most of them in European and Chinese waters. The largest, known as Hornsea 2, is in the North Sea, off the English coast; it comprises a hundred and sixty-five turbines, each so massive that a single sweep of its blades can power a household for a day. Block Island Wind Farm and Hornsea 2 are owned by the same company, which used to be known as Danish Oil and Natural Gas, or dong, but recently—and for obvious reasons—changed its name, to Ørsted. (It also owned Vindeby, which was decommissioned in 2017.) As more turbines have gone up, costs have plunged; just in the past decade, the price of offshore wind energy has declined by half.

Onshore wind has grown even faster, and its cost, too, has plummeted. In many parts of the world, it's now cheaper to put up turbines than it is to operate an existing power plant that burns natural gas. In places with a lot of wind, such as Denmark, Ireland, and western Oklahoma, there's sometimes so much power pouring into the grid that producers have to pay to get rid of it.

The price of solar power, meanwhile, has declined even more spectacularly. Since 2010, it's dropped by more than eighty per cent. According to the International Energy Agency, solar power now offers "some of the lowest-cost electricity ever seen."

The rapidly falling price of renewables makes it possible to imagine a not too distant future in which the world generates all its electricity emissions-free. Already there are brief periods—on the order of minutes—when California can produce enough electricity from renewables to meet its demand. In Denmark, this happens for entire windy days. (It occurred two days in a row this past May.)

And, once it's possible to imagine a carbon-free grid, all sorts of other opportunities open up. Substitute electric motors for internal-combustion engines and cars, too, can run emissions-free. The same goes for trucks and buses, ferries and forklifts. Plug them in! Tear out boilers and replace them with heat pumps! Swap gas ranges for induction stoves! Electrify as much as possible. Ideally, electrify everything.



1600K

Getting there together...



Are you happy with the speed limits on Hurunui District's roads?

We want to hear what you think.

By using our **Interactive Map** you will be able to provide localised feedback, which will help us create our draft Interim Speed Management Plan, (staff at our libraries will be able to assist you too.)

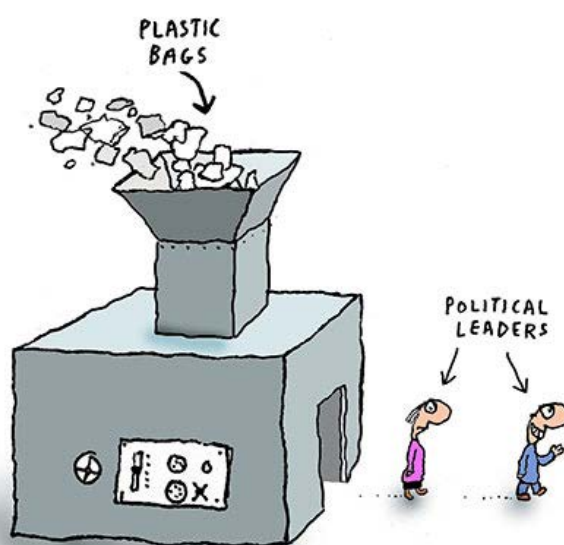
Alternatively, send us an email at: info@hurunui.govt.nz (please write ISMP in the subject line.) We look forward to hearing from you.

MAP <https://www.hurunui.govt.nz/roading-water/transport-network/1600k-community-driven-road-safety>

PLASTIC RECYCLING BREAKTHROUGH.

Awesome scientific triumph as amazing new miracle process converts waste plastic shopping bags into fully functioning political leaders.

This is INCREDIBLE







2022 Christmas Parade





Lions Club Dinner

On wednesday 14th, we went to the Lions club at Hanmer Golf Club to perform. It was a Christmas dinner for the slightly older members of our community. We did Kapa Haka and pop choir. There were about 53 of us. We walked from the school, down the Crawford walkway. The Lions and the guests were really nice. They gave us ice blocks. We got there and performed the Kapa Haka then watched the amazing pop choir lead by Ros. They sang some beautiful songs. The guests really enjoyed our performance and applauded loudly. Then we walked back to school in the blazing hot sun.

By Blake James



Top Team

On Wednesday the 14th of December we had Top Team on our school field. Top team is an event where you participate in 8 activities. We got put into teams of 5 or 6 and my group's team name was Marley's Eagles. The first activity we did was gumboot throw, we had to throw a gumboot at a target which the white part was 1 point. The blue part was 3 points and the yellow part was 5 points. We ended up with 180 points. The next thing we did was the sponge gauntlet and we had to fill a sponge with water and then pass it to people, then the last person would empty the sponge into a bucket and then go to the front, we won that with 60 points. The next thing we did was the burst pipe and to win you had to cover holes on a pipe and fill it up with water to make a tennis ball come out, we did lose but it was fun. The next thing we did was a thing where you had to put a hexagon platform on the bottom and then put three big cones, then a smaller hexagon platform and put three smaller cones on it and then a very small hexagon platform and put a bucket of water on it and carry the lot to another bucket, then pour the water into it and so on, we had a great time. It was challenging completing all the challenges. There were other activities but these are some of them. My team came 3rd. We all got soaking wet but it was great fun and we got soaking wet. In the heat we quickly dried out.

By Sebastian

Pinkie Journalists

Richard Tapper has kindly and generously worked with the school to ensure the school and its activities are well presented in the community. Students have written all the articles for The Pinkie over the last 20 weeks, a considerable achievement.

In recognition of the efforts Richard gave grants to the students.

He also gave Michelle Saric an award towards her study on Structured Literacy.

Awards;

Senior Journalists; Amelia Saric and Sharnie Inglis \$100 each

Aspiring Journalists; Amelia Nelson, Rosie Abbott,

Kiara Bratschi \$35 each

Sustainable Literacy Study

Award; Michelle Saric. \$300.

Thank you most sincerely

Tom Davies.



Year 8 Jet Boating

On Monday 12th Dec Mr Shannon took the year 8s at Hanmer Springs school to climb up conical hill and then go on a Jet Boat ride. The day was donated to us by Mr and Mrs Cameron parents of Aalya and Aaryan.

On the way down from conical hill, Issac left his hat up at the top, but the other students didn't tell him until we were too far down to go back up.

The Jet Boat was really fun and I enjoyed it when we drove really close to the rocks. Everyone screamed, but I still enjoyed it. The boat captain told us educational things about some of the places we went past, which was really interesting. It was very fast and a nice end to our time at Hanmer Springs School. The water, gorge and scenery were spectacular. We highly commend you go on the trip.

Alfie Lester.

Hanmer
Springs
School



Let your bach **PAY FOR YOUR** SUMMER HOLIDAY

Bachcare takes care of your holiday home rental bookings, guests and cleaning so you don't have to. Plus, by listing with Bachcare you are automatically advertising with over 20 partner sites including Airbnb, Bookabach and Booking.com. Let your bach today, and have it pay for your summer holiday.

Get in touch for your free
income appraisal

0800 42 22 42
newowners.bachcare.co.nz



bachcare
THE HOLIDAY HOME CO.

Hanmer Springs School Prize Giving

Standing Room Only



At the Community Hall on Thursday 15th December HS School held its annual Prize Giving and Award Ceremony. Here are some of the highlights.

As all the audience and families arrived you could see the nervousness on Madi's eyes as she prepared to MC the event with Tayla-Rae. Students were full of excitement to see who won the awards. The ceremony opened with Academic awards to each year group.

The Kapa Haka and the Pop Choir performed a special performance. Year 8s received their Graduation Certificates, special leavers Hoodies and some gave speeches. Tayla's brought tears and Alfie and Issac brought laughter.

Macey Batchelor received the Ice Axe for Outdoor Education and Madi Gavin won the Kate Hodges Cup for all round excellence.

Alfie Lester and Theo Dowdy won the top awards for Literacy and Maths. Issac Lamont was awarded Top Academic student.

The teachers performed the 12 Days of Christmas with student sayings like "I forgot my book", "I need a drink," "not Maths again" Mr McBride bought the house down with his "I need a Pee".

Amelia Saric and Amelia Nelson were appointed Head Students for 2023 with Charlie Bryant, Levi Vautier and Preeti Watson as Deputy Head Students.

It was a great end to the year and a sad goodbye to the amazing Year 8's





*Lions Club
Annual Christmas Dinner for Senior Citizens*

HANMER SPRINGS MOUNTAIN BIKE CLUB



For over nearly 20 years the Hanmer Springs Mountain Bike Club has worked hard to develop the fantastic MTB trail network we have today. The Hanmer Forest Park network is a true mountain biking destination drawing people to Hanmer Springs from Canterbury, the rest of NZ and overseas.

As the voice of all the hundreds of thousands of trail users the Hanmer Springs Mountain Bike Club advocates for and leads trail building projects in the Hanmer Forest Recreation area and beyond. We also provide representation on local Track Network Group to work alongside the other trails groups and landowners in the area.



Mountain Biking is well researched and provides numerous positive benefits for the community as more people stay and use the Hanmer Springs businesses. The average spend of a MTB rider is much higher than your average tourist/walker and this provides direct benefits to local businesses.

What has this got to do with you?!

Our Committee is in need of new members to help share the load and provide new ideas. You do not need to even be a MTB rider!! If you can work well in a team and recognise the benefit of the MTB Trails to the community please come and join us.

We usually hold quarterly meetings and occasionally others if the need requires.

If you can help or need more information please contact: highspaces@hotmail.com



A QUIET DEEP LOOK INTO NEW ZEALAND

RETIREMENT VILLAGES/REST HOMES

by **Pita Alexander**

- How many New Zealanders are now over 75 years of age: 345,940.
- What is this figure estimated to be in 2048: 832,810 (an increase of 140%).
- Approximately one in 12 New Zealand people over 75 years of age are in a retirement village.
- How many residents are presently in these retirement homes: 48,736.
- Who are the big six so-called retirement villages: Ryman, Metlifecare, Summerset, Oceania, Arvida and Bupa - this group presently is around 65% of present units.
- How many retirement villages/rest homes are there around New Zealand: 647.
- Retirement villages/rest homes: The two are hard to separate in that some cope with both younger and older people, some have a lot of facilities and also have a hospital section. In principle, the people in retirement villages are some nine years or so younger.
- Rental arrangements are possible but are not nearly as common as "licence to occupy", which involves a capital sum.
- The various options are quite complicated and legal advice is critical.
- The New Zealand Government will assist with the costs, but this is very much limited by an asset and income test which would exclude many people.
- The Government records show that the average time in a rest home for Government financial assistance patients was 800-900 days (that is, they died on average within 800-900 days of entering the rest home).
- The cost of living in a residential care situation is essentially in two parts:
 - (a) A "care" component
 - (b) An "accommodation" component.
- The combination varies, but currently seems to be in the bracket of \$60,000-\$80,000.
- A single person over 65 years receiving Gross National Superannuation will have a tax paid figure currently of \$24,201, which would cover approximately 34.6% of the midway bracket in the previous point (that is \$70,000).
- Looking into the future, Government will have to face topping up quite a number of rest home costs even though the income test and asset test is set at a low level.
- There have been recent changes to rest home legislation, partly from Government and partly from the rest home's own organisation.
- Retirement villages seem to be expanding and doing well, while aged care are facing a staffing shortage over nurses pay and have forced the closure of 400 beds. Sooner or later this will fall back on Government.
- How many aged care beds are there presently in New Zealand: 37,000.
- Five of the biggest six rest home are New Zealand public companies.
How is another big health organisation coping: The National Health Service in England (called NHS):
 1. It is under unprecedented strain.
 2. Discharging a patient involves a lot of paperwork.
 3. Presently there are 13,600 patients ready to be discharged, but there are no carers to look after them when discharged.
 4. In 2021 the number of workers in adult social care fell by 50,000.
 5. Presently, the NHS has 165,000 vacancies: 1 in 11 posts is unfilled.
 6. Public satisfaction has fallen from 29% to 15%.
 7. To get publicly funded assistance from the NHS a patient's net assets base must be less than \$44,408 (\$NZ).
 8. A rest home company with six rest homes recently stated that they need £800-£1,000/week to look after a client in their rest homes. This equates to \$1,528-\$1,910/week in \$NZ.
 9. On the other hand, it apparently costs the NHS £2,500/week (this is \$4,775/week in \$NZ) to keep someone in hospital.
 10. Approximately two-thirds of hospital patient's overall costs are Government and Council funded, with the other one-third being funded by the patient.
 11. The median hourly wage of a care worker is currently £9.50/hour (\$18.14 in \$NZ).
 12. Rest homes are struggling with the much higher current cost of energy.
 13. Around one in seven over 65 years of age are facing funding \$191,000 (\$NZ) themselves in future health costs because they cannot fit below the NHS net asset test.

Maybe our New Zealand health system and rest home situations are better than we thought.

DO YOU NEED ASSISTANCE WITH HOLIDAY HOME OR RENTAL PROPERTY MANAGEMENT?

Maximise your return and minimise your stress
by using our professional services.

With 17 years
of local experience,
we can help!



Hanmer Holiday Homes

"There's no place like a home!"



63 Conical Hill Road,
Hanmer Springs 7334



03 315 7336
DDI: 03 261 8032



www.hanmerholidayhomes.co.nz
owners@hanmerholidayhomes.co.nz



LIQUID WASTE MANAGEMENT

WE HAVE THREE 6x6 TRUCKS FOR WET OR HILLY TERRAIN



**SEPTIC TANK EMPTYING
PUMPS SUPPLIED & FITTED
GREASE TRAP EMPTYING
WATER JETTER TO CLEAR
BLOCKED DRAINS
PORT-A-LOOS**



20,000 & 30,000 LITRE TRACTOR DRAWN TANKERS

8 METER PROP STIRRER & STORTH LAGOON MIXER

100% CANTERBURY OWNED & OPERATED

EMAIL: robsonenviro@xtra.co.nz

PHONE: 03 349 8871

DRY MUCK SPREADERS

LOADER HIRE

BEEN IN THE BUSINESS FOR OVER 45 YEARS

WWW: robsonenvironmental.co.nz

FREEPHONE: 0800372003

Santa is Coming and So Is the Census

Santa might be just days away from landing in Aotearoa New Zealand but there'll be no rest in many households over the next couple of weeks as cooking, cleaning, and child-minding ramps up across the motu for the festive period.

How much unpaid work people have done in the four weeks leading up to Census Day on 7 March 2023 is just one of the questions being asked in the five-yearly New Zealand Census of Population and Dwellings.

"Unfortunately, while all that back-breaking extra work during the festive season won't be counted in the next census, the clean house and the stuffed turkey will, we have no doubt, be appreciated by families and friends at Christmas," Deputy Government Statistician and Deputy Chief Executive – Census and Collections Operations Simon Mason said.

The 2018 Census showed that almost 86 percent of people aged over 15 carried out some form of unpaid work around the house in the four weeks leading up to Census Day. Unpaid work around the house includes cleaning, cooking, carrying out repairs, and gardening.

Unpaid work also includes looking after children and anyone in your household who is ill or has a disability, babysitting other people's children, and voluntary work outside the home for any organisation, group, or marae.

"By completing the census, you create a better idea of what you, your family, and your community need. All responses are combined to produce statistics that provide a picture of life in Aotearoa New Zealand and how it is changing," Mason said.

Census packs will start being delivered from mid-February next year. Significant improvements have been made to make participation in the 2023 Census easier for a wide range of people.

"Census teams are working hard to ensure that everyone has what they need to complete the census when the time comes, so they can be fairly represented in the census data produced," Mason said.

"And just in case anyone's wondering, we won't be asking whether people have been naughty or nice in the 2023 Census. We'll leave that to Santa."



Terrible
with money?
Debt
problems?

We can **teach**
you to **manage**
your money
better

Need help to
access your
Kiwisaver?

We can talk to
other agencies
on your behalf

We provide
a **free and**
confidential
service

For anyone in
the **Waimakariri**
or **Hurunui**
District

Contact: **Sharon Grant** | Service Manager
E-mail: servicemanager@bsnc.org.nz Ph: 03 313 3505
Office: War Memorial Hall, 1 Albert Street, Rangiora
Find us on Facebook: (Budgeting Services North Canterbury)
www.bsnc.org.nz

Supported by: MSD and the Rātā Foundation
Affiliated member of FinCap (National Building Financial Capability Charitable Trust)
Registered Charity Number: CC10710

Hanmer's Quality Builders
30+ years experience

 www.minsonbuilders.co.nz
 027 433 0730

trivia.

Quiz



1. What is the medical term for low blood sugar?
2. Other than the sun, what star is closest to Earth?
3. What are the two biggest selling spices in the world?
4. What does the medical emergency term CPR stand for?
5. What would someone be studying if they were using an ophthalmoscope?
6. To whom did Adolf Hitler dictate "*Mein Kampf*" while in prison?
7. Which island produces the majority of the world's vanilla pods?
8. What disease would an oncologist treat?
9. Which country has suffered the world's two most devastating earthquakes in recorded history?
10. How many planets are there in the solar system?
11. Which metal is the most malleable?
12. Which continent is cut into two almost equal halves by the Tropic of Capricorn?
13. Which explorer introduced pigs to New Zealand?
14. Which planet spins the slowest?
15. Which fish is the only one to produce real caviar?
16. There is a grave for her in Buenos Aires but she is actually buried in Milano, Italy. Who is she?
17. Which Italian astronomer is said to have invented the thermometer?
18. Which country presented the United States with the Statue of Liberty?
19. What number does the prefix 'giga' stand for?
20. What word describes a number system with a base of two?
21. What name is given to a spindle that joins two wheels?
22. Who duetted with Meat Loaf on the single 'Dead Ringer for Love'?
23. Inhabitants of Manchester go by which name?
24. Which imperial measure approximates 28 grams?
25. Who first made the oft-repeated statement, "*A week is a long time in politics*"?
26. Tinnitus affect which part of the body?
27. What is the medical name for the windpipe?
28. Which group of islands are located in the Mozambique Channel to the north-west of Madagascar?
29. Geronimo was a member of which native American tribe?
30. Which child star sang "*On The Good Ship Lollipop*"?



Community Notices

Hurunui District Councillors

Please feel free to contact us, as your closest representatives.

Tom Davies Hanmer Springs
0276007779

tom.Davies@hurunui.govt.nz

Dave Hislop

Mobile: 027 443 6909

dave.hislop@hurunui.govt.nz

Ross Barnes, Mount Lyford

03 315 6583

ross.barnes@hurunui.govt.nz

Karen Armstrong, Waikari

karen.armstrong@hurunui.govt.nz

03 314 4042 or 0274 383 464

Hanmer Springs

Golf Results Saturday

RESULTS NOT
PROVIDED

JPs in Hanmer Springs

Alice Stielow 021 317 001.

Joy Wilson 027 2202511

Rod Ell 315 7222 027 4372464

Jonathan Gardiner. 315 7925 0276859276

Ann Toomey - 03 384 2564 021 155 7622

TRIVIA ANSWERS

1. Hypoglycaemia. 2. Proxima Centauri 3. Pepper and mustard 4. Cardiopulmonary Resuscitation 5 The eye
6. Rudolf Hess 7. Madagascar 8. Cancer 9 China 1556 (630,000 dead) and 1976 (750,000 dead) 10. 8 (since Pluto's demotion) 11. Gold 12. Australia 13. James Cook 14. Venus (it takes 243 Earth days per rotation) 15. The sturgeon 16. Eva Peron 17. Galileo 18. France.
19. A billion 20. Binary 21. An axle 22. Cher.
23. Mancunians 24 one ounce 25. Harold Wilson
26. The ears 27. Trachea 28. The Comoros 29. Apache
30 Shirley Temple

HANMER SPRINGS BRIDGE CLUB

Restart play Thursday 19th January 2023

Seasons Greetings To All



AMURI AGRICULTURAL AND PASTORAL ASSOCIATION

ENTRIES ARE NOW OPEN!!!

AMURI A & P SHOW

SATURDAY 4th MARCH 2023

Entries open: NOW

Entries close: Friday 10th February

Late entries: will only be accepted until Friday 17th February, will incur a 50% penalty fee per entry, and your name will not show in the catalogue.

After 17th February, 2023 @ 11.59pm - **NO MORE ENTRIES** will be accepted.
Spread the word and enter **NOW!!** Be sure not to miss out!!!

Visit www.showdayonline.com

look out for schedules at local businesses,
or e-mail amuriap@yahoo.com for a copy to be sent to you.



Events Calendar

JANUARY '23

28th Biennial St James Horse Sale

FEBRUARY '23

18 & 19. Upholstery Workshop with Steve McDonald
25 Motofest @ The Domain

MARCH

4th. Amuri A & P Show
5th Waipara Wine and Food Festival

APRIL

1st Bandquet

If you have events that are on this coming year please let us know

info@thepinkie.co.nz

www.thepinkie.co.nz

The events calendar is looking very bare so if you have any events on, please let us know.

Research shows us this is a much used section of the Pinkie

The Amuri Community Arts Council are pleased to be displaying

Snapshot

a group exhibition featuring selected works by Sarah Anderson, Janneth Gil, Karen Greenslade, Viv Kepes, Stephanie McEwin. MiKyung (Amelia Jang and Mark Soltero

Exhibition runs until end of January

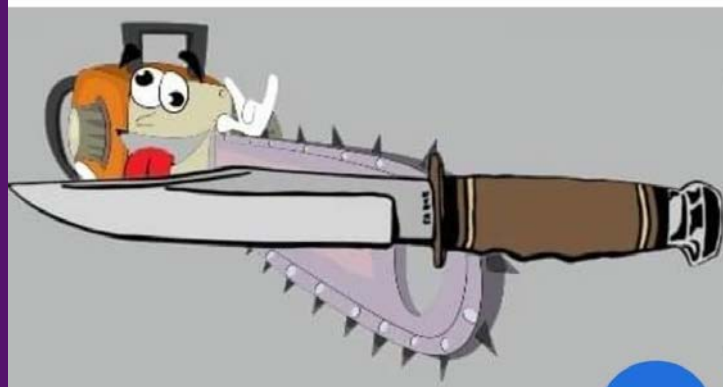
ACAC Gallery

Hanmer Springs Library

To All Pinkie
readers and
subscribers.
Have a great
festive season
and a
prosperous
2023

Knife and Chainsaw sharpening services

Locally based please call or text Murray on 027 223 0367



CLASSES & FITNESS, CLUBS & MUSIC

HANMER SINGS Adults Choir

Come and raise the roof with us! We are a super friendly and welcoming bunch who simply love singing. We sing a wide variety of songs (always open to requests!) while learning harmonies and singing techniques. Hanmer Sings is FREE! The more the merrier! Donations are optional.
Tuesday nights 7pm-8.30pm

YOGA

weekly classes

Contact Olivia 021 548 77

TUESDAY WALKERS

Tuesday morn walks in local forest area. Approx 1½ - 2 hours. Meet 9.45 am at Jollies Pass Rd Forest Entry car park (by old DoC house) More info Anne 0212777515 or Julian 021 148 2811

Hanmer Springs Tennis Club

During season twilight tennis plus kid's coaching. Contacts:, Olivia Reid 021548776 (adults), Sarah Currie (Kids) 02108264557 Talia Shadbolt 021170 7114 (Senior Interclub)

PILATES

Pilates classes @ 12 Amuri Ave
Mon 5.30pm Thursday 8.45 am 10 am
Corrie 0210457666
Wendy 027243 2123

Tramping group

Day tramps in local mountains and surrounding areas. Every Wednesday. For more information contact Janet 021 103 4303. Mt Isobel Tramping Group

HANMER SPRINGS COMMUNITY GYM

For use by members. Located downstairs @ Sports Pavilion. Machines for cardio & weight exercise. Membership enquiries
Phone Shane Adcock 021 921 109

LINE DANCING

Memorial Hall Monday 1 pm
Contact Penny 0272 408 321
Cost:donation

HANMER SPRINGS BRIDGE CLUB

THURSDAYS AT THE ANGLICAN CHURCH HALL @ 7.15 pm
Call Joy 027 220 2511

AQUACIZE

Thermal Pools entrance,
Monday mornings 10 am.
Informal group. Will need aqua stick. For more information
Contact
Linda 021 223 8188

Hanmer Springs Community Band -

'The Notables' are seeking players. Particularly a drummer, keyboard and bass player. You will need to read sheet music or have a really good ear. Join Hanmer's 'little' Big Band. Monday nights 7 to 8.30pm (school terms). Instruments are also available to borrow. Contact Marguerite for details: 0211254062

MORRIS DANCING

lots of laughs with some added exertion.

Dancers and musicians welcome
Sundays 7 pm onwards
Contact John 021395022

Listings on these pages are free and are the responsibility of those listed to keep up-to-date

FACILITIES & VENUES

HANMER SPRINGS GOLF CLUB

AVAILABLE FOR HIRE FOR FUNCTIONS, WEDDINGS, FUNERALS ETC. Fully equipped kitchen, Spacious, warm, carpeted room. Bar facilities. Phone 315 7110

Hanmer Springs Lions Club

Dinner meetings every 2nd Thursday of the month at Five Stags at 6.30pm. All welcome. To join or for more information, contact Boio Sarahu-Hothersall, email hanmerspringslionsclub@gmail.com.

COMBINED PROBUS CLUB HANMER SPRINGS

Meetings first Tuesday each month
Fun and Fellowship ..
for the more mature
To join or for more information Contact:-
Rosemary Oram Ph 021 2556262
Dennis Hall 021 294 1541

CHURCHES

REMNANT CHURCH NZ

Sunday 10 am All welcome
108 Rippingale Rd
A Four Square Church
0210767236

SPORTS PAVILION

Available for sports groups, weddings, functions etc. Fully equipped kitchen. Large carpeted function room. Changing rooms, showers. Contact The Hurunui District Council Nicola on 03 314 8816.

ANGLICAN CHURCH HALL

Available for hire for community groups, Meetings, worship, retreats etc.
Contact Shirley Whitaker 0274 161415

Hanmer Church of the Epiphany

31 Jollies Pass Road - Sundays 10 am
1st & 3rd Sunday – Morning Worship
2nd & 4th Sunday – communion
Tea & Coffee after Sunday service.
Contact: Jonathan Gardiner
315 7925 / 0276 859 276 (warden)

Catholic Parish of the Good Shepherd, Hurunui

St Roch's Church 27 Amuri Ave. Mass 5 pm each Saturday
Culverden Church Mass 6.30 pm
first Sunday of each month &
2nd 3rd Saturday each month

USE 105 FOR POLICE NON-EMERGENCIES

Fire, Ambulance and Police Dial 111

Know your Plastic Codes as In Hurunui 1, 2 and 5 ONLY can be Recycled

Symbol	Acronym	Full name and uses
	PET	Polyethylene terephthalate - Fizzy drink bottles and frozen ready meal packages.
	HDPE	High-density polyethylene - Milk and washing-up liquid bottles
	PVC	Polyvinyl chloride - Food trays, cling film, bottles for squash, mineral water and shampoo.
	LDPE	Low density polyethylene - Carrier bags and bin liners.
	PP	Polypropylene - Margarine tubs, microwave-able meal trays.
	PS	Polystyrene - Yoghurt pots, foam meat or fish trays, hamburger boxes and egg cartons, vending cups, plastic cutlery, protective packaging for electronic goods and toys.
	Other	Any other plastics that do not fall into any of the above categories. For example melamine, often used in plastic plates and cups.



SUMMER HOURS From Tuesday 13 Dec

- **Tuesday: 11am to 1.30pm**
- **Wednesday: 11am to 1.30pm**
- **Friday: 11am to 1.30pm**

Out of hours recycling facilities for paper, card, cans, plastics types 1, 2 & 5 only and glass bottles are provided; please ensure recycling is clean, loose and all lids are removed. Soft plastics (i.e. those you can scrunch in your hand) are not recyclable and must be placed in the refuse.

Kerbside refuse and recycling collection – Monday 8am

Only official refuse and recycling bags will be collected; these can be purchased from Hanmer Springs Service Station and the library.

Via the recycling bags clean paper, card, cans and plastics types 1, 2 & 5 only can be recycled.

If in doubt – place it in the refuse to save contaminating recycling.

Non complying bags and recycling bags containing glass and soft plastics will not be collected.

Please Note that HDC garbage & recycling bags are no longer available from the Four Square supermarket . Henceforth, bags will only be available from Hanmer Springs Service Station, the library , The Log Cabin and Super Liquor

Hanmer Springs Transfer Station Amended Opening Hours.

As many will have seen, Hurunui District Council has recently been advertising for a staff member to run Hanmer Springs Transfer Station.

Unfortunately The Council has not been successful in recruiting, and like others is feeling the impact of staff shortages in New Zealand.

Rather than close the Transfer Station, temporary arrangements have been made but this has meant reducing the opening hours.

From Tuesday 13 December, the Transfer Station will open at the following times:

Tuesday: 11am to 1.30pm

Wednesday: 11am to 1.30pm

Friday: 11am to 1.30pm

It is hoped that this will be a temporary arrangement, as we recruit. Any changes will be advertised on Council's website, in The Pinkie, on Council's Facebook page and Hanmer Springs Noticeboard.

Due to the reduced hours, the site will be busy. Please be patient with the staff if required to wait. To reduce time on site, please undertake the following steps prior to arrival.

Remove and dispose of lids from glass and plastic bottles.

Ensure recycling is clean, pre-sorted, and free of contaminants.

Ensure green waste meets Council's acceptance criteria.

Keep your recycling, scrap metal, green waste, and waste separate when loading to reduce sorting time on site.

If possible, bring someone to help unload larger items or volumes.

For information on waste and recycling, visit Council's website or call 03 314 8816 /Free phone 03 315 8400.

We apologise for any inconvenience these temporary hours may cause, as we work to recruit.





VillagePLUMBING LIMITED

- ◆ Burst pipes
- ◆ Tap repairs
- ◆ Design advice
- ◆ Renovations
- ◆ New homes

Mike Lawrence
Craftsman Plumber
021 546 477 (24hrs/7days)
PO Box 222, Hanmer Springs
email: info@villageplumbing.co.nz

ph 0800 529 736

From planning to hand over
Plans, Consents, Q.S. & Quality Build
Full Professional Service



o'brien construction
Hanmer Springs

CONTACT:
Mark: 027 222 5408 Peter 021918 508
email: mark@obrienconstruction.co.nz
email: peter@obrienconstruction.co.nz

CHIMNEY CLEANING & REPAIRS

Abel & Prestige offer a professional service including firebox repairs, replacement bricks, bird netting and more...

Phone us to book in
0800 661 244
www.abelandprestige.co.nz



Abel & Prestige
CHIMNEY & FLUE SERVICES



Peter Moody
Phone 021 927 037
E: peter@floorpriderangiora.co.nz
For all your flooring needs.




Trust in the strength of Bayleys Hanmer

Our team at Bayleys Hanmer understand what's involved in selling or renting your property and having your staff houses inspected. Backed by strong local knowledge and in depth marketing experience, Bayleys Hanmer takes a no nonsense approach through exceptional service and an easy-to-deal with manner.

For a complimentary update on the market and your property's value, contact us today.

Bayleys Hanmer Springs
03 315 7717 | hanmer@bayleys.co.nz
10 Conical Hill Rd, Hanmer Springs 7334

WHALAN AND PARTNERS LTD, BAYLEYS, LICENSED UNDER THE REA ACT 2008



ALTOGETHER BETTER

Residential / Commercial / Rural / Property Services

www.thepinkie.co.nz